

更多精彩内容请登录 STCN 证券时报网.中国 http://data.stcn.com

“冷空气”来袭 基金抱团“御寒”

资金策市

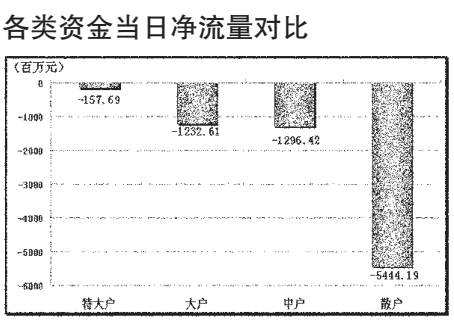


Table with market fund dynamics: Industry, Amplitude, Net Flow, Large Fund, Small Fund.

Table with top 10 net outflow industries: Industry, Net Flow, Main Capital, Shareholder, Return.

每日个股资金净流入(出)前十

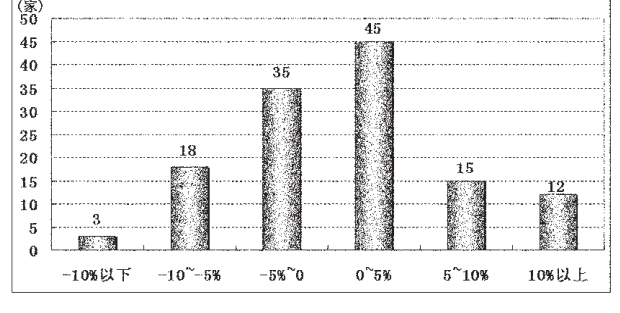
Table with top 10 net inflow stocks: Code, Name, Net Inflow, Daily Change.

个股连续流入(出)天数排名

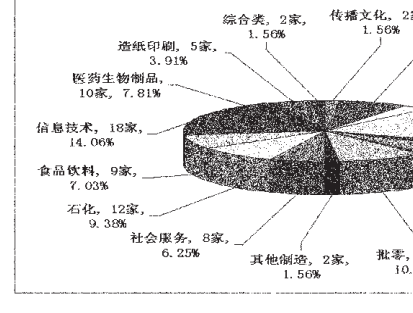
Table with top 10 consecutive inflow stocks: Code, Name, Days, Net Inflow, Daily Change.

据 STCN 资金流向快报 (http://data.stcn.com/statisticalData.shtml) 数据显示,11月22日,沪深两市共流出资金81.31亿元,连续第11个交易日净流出。其中,沪市净流出50.70亿元,深市净流出30.61亿元。主力资金合计流出13.90亿元。

基金抱团股 11月12日以来涨跌幅区间分布



基金抱团股行业分布



自11月12日起,一股强“冷空气”入侵A股市场,上证指数从3186.72点滑落至2806.64点,下挫380.08点。截至昨日收盘,沪指累计跌幅依然达8.37%。在这波急跌中,基金抱团股“暖意”正浓。

根据聚源数据,2010年三季度末,前十大流通股股东中三家以上为基金,且基金持仓占流通股A股比20%以上的个股共计128只。11月12日以来,128只基金抱团股平均上涨1.5%,远超大盘同期表现。其中,72只个股逆市上扬,占比56%,鼎龙股份、多氟多累计上涨高达18%,美邦服饰、易联众、拓维信息等10只个股涨幅均超过10%。而基金抱团股中下挫10%以上的仅有3家。

从基金抱团股行业分布来看,128只个股中23只来自机械行业,占比18%;18只来自信息技术业,占比14%;13只来自批发零售行业,占比10%。其余个股出自石化、电子、医药生化、食品饮料等行业。(何佳)

三只以上基金持有且基金持股占流通A股比20%以上的个股

Table listing 128 stocks held by 3+ funds with >20% A-share ratio. Columns include code, name, fund count, shareholding, price, and industry.

Table listing 128 stocks held by 3+ funds with >20% A-share ratio. Columns include code, name, fund count, shareholding, price, and industry.

单笔成交突变个股

Table with top 10 single-trade mutation stocks: Code, Name, Single Trade, 5-day Avg, Mutation Degree.

跑赢二十日均线的个股

Table with top 10 stocks outperforming 20-day moving average: Code, Name, Current Price, 20-day Avg, Win Rate.

相对大盘强势个股

Table with top 10 stocks outperforming the market: Code, Name, Current Price, 5-day Avg, Relative Strength.

部分量增价涨个股

Table with top 10 stocks with volume increase and price rise: Code, Name, Current Price, 5-day Avg, Volume Change, Price Change.