

透视基金数据 把握投资机会

上海证券基金评价研究中心 本版数据除注明外均由上海证券基金评价研究中心提供

上海证券基金评价研究中心 QDII 基金一周业绩表现 (2011.1.17-2011.1.21)

Table with columns: 代码, 名称, 成立日期, 投资分类, 管理人, 境内托管行, 基金净值, 净值增长率, 净值增长率, 净值增长率. Lists various QDII funds and their performance metrics.

注: QDII 基金净值公布存在一定时滞, 请读者最新净值表现

封闭式基金一周业绩表现

Table with columns: 名称, 代码, 份额(亿份), 到期日, 收盘价(元), 周涨幅%, 折溢价率%. Lists closed-end funds and their weekly performance.

Table with columns: 名称, 代码, 份额(亿份), 到期日, 收盘价(元), 周涨幅%, 折溢价率%. Lists closed-end funds and their weekly performance.

LOF基金一周业绩表现

Table with columns: 名称, 代码, 收盘价(元), 周价格涨幅%, 折溢价率%. Lists LOF funds and their weekly performance.

ETF基金一周业绩表现

Table with columns: 名称, 代码, 跟踪指数, 管理人, 跟踪误差, 跟踪误差, 跟踪误差. Lists ETF funds and their performance relative to their benchmarks.

股票分级基金一周业绩表现

Table with columns: 名称, 代码, 跟踪指数, 管理人, 跟踪误差, 跟踪误差, 跟踪误差. Lists equity structured funds and their performance.

晨星开放式基金业绩排行榜

Large table showing Morningstar's top-performing open-end funds across various categories, including equity, bond, and international funds.

晨星开放式基金业绩排行榜

Large table showing Morningstar's top-performing open-end funds across various categories, including equity, bond, and international funds.

上海证券各类型基金净值走势及业绩表现

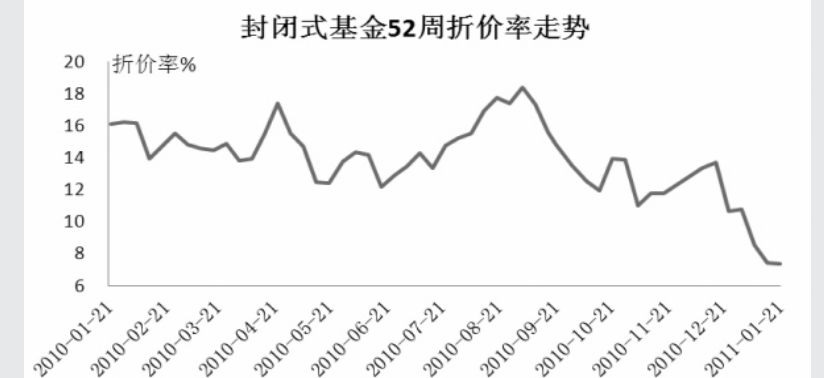
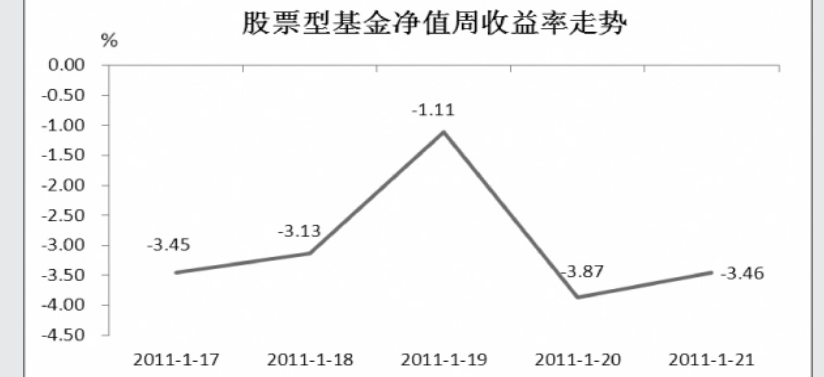
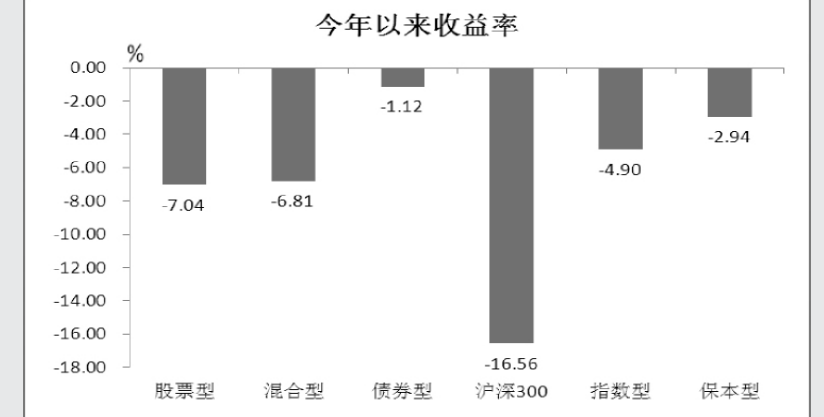
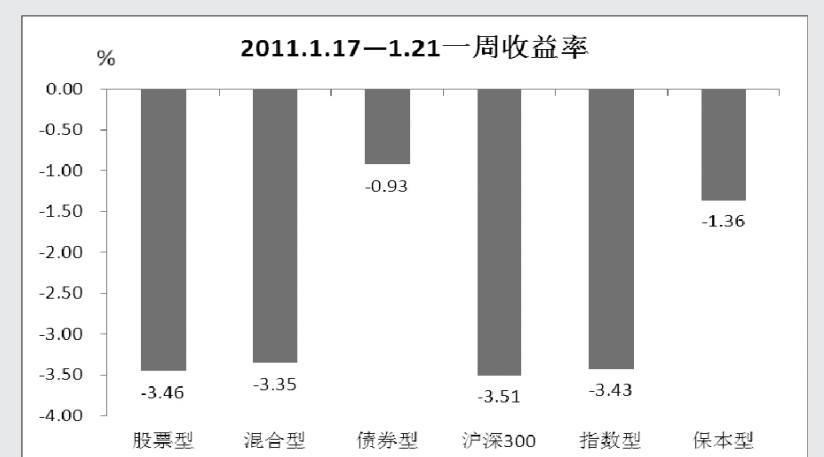


Table showing Morningstar's top-performing closed-end funds, including their names, codes, and performance metrics.