

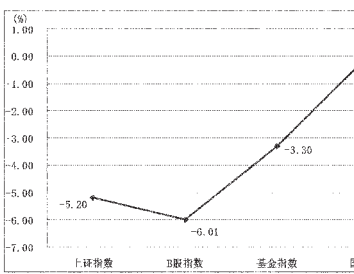
深沪证券市场一周数据

更多精彩内容 http://data.stcn.com

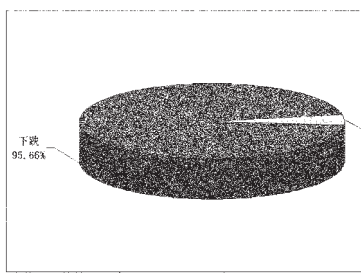
2011.05.23-2011.05.27

市场数据概览 | Market Overview

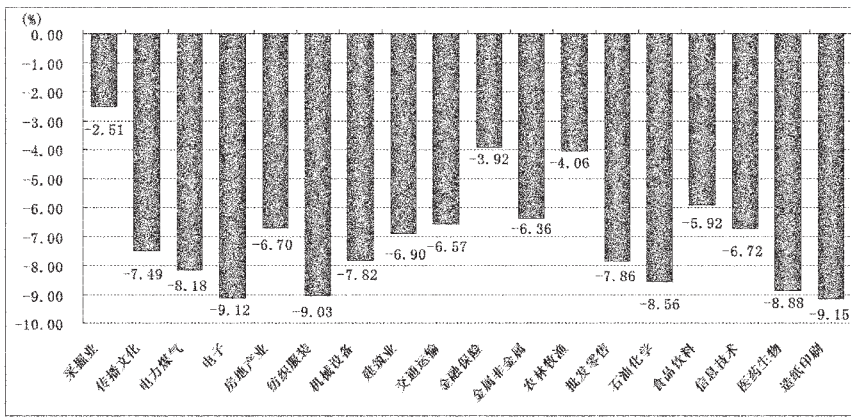
本周主要指数涨跌幅



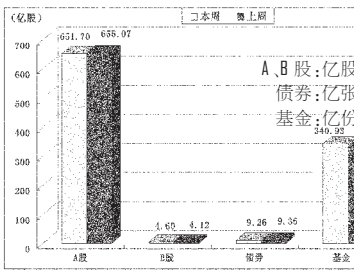
本周A股涨跌幅分布



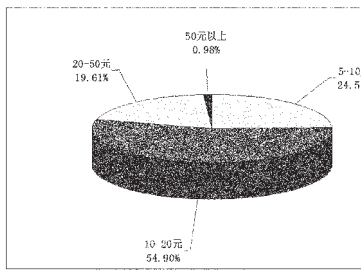
本周各行业涨跌幅



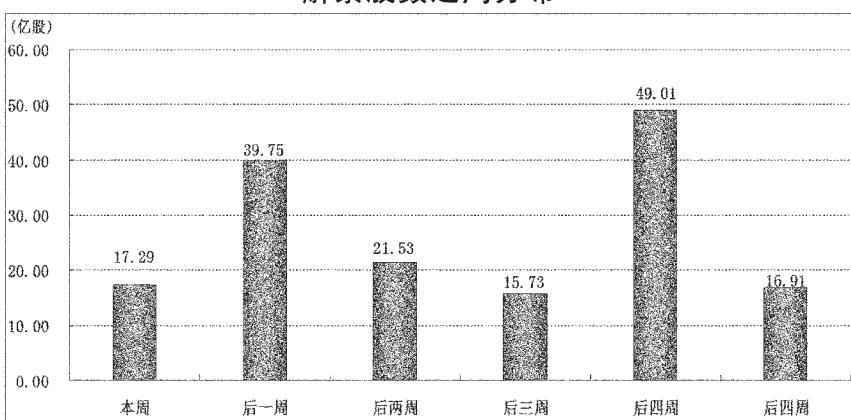
两市周交易量



本周上榜个股股价分布



解禁股数近周分布



热点板块追踪 | Hot Track

有色金属板块市场追踪

Table with columns: 代码, 简称, 收盘价(元), 周涨跌幅(%), 周换手率(%). Lists various metal-related stocks and their performance.

食品饮料板块市场追踪

Table with columns: 代码, 简称, 收盘价(元), 周涨跌幅(%), 周换手率(%). Lists various food and beverage stocks and their performance.

农林牧渔板块市场追踪

Table with columns: 代码, 简称, 收盘价(元), 周涨跌幅(%), 周换手率(%). Lists various agriculture, forestry, and fishing stocks and their performance.

交易指标排行 | Stock Ranking List

本周A股升幅最大

Table listing top-performing A-shares with columns: 股票代码, 股票简称, 收盘价(元), 周升幅(%), 本周最高价(元).

本周明显放量的A股

Table listing A-shares with significant volume increases with columns: 股票代码, 股票简称, 本周成交量(万股), 比上周增量(万股), 本周平均单笔成交(股).

本周A股市盈率最低

Table listing A-shares with the lowest P/E ratios with columns: 股票代码, 股票简称, 收盘价(元), 2011年一季度每股收益(元), 动态市盈率(倍).

本周基金重仓股升幅最大

Table listing stocks heavily held by funds with columns: 股票代码, 股票简称, 基金家数, 2011年一季度基金持有股数(万股), 本周升幅(%).

本周A股跌幅最大

Table listing A-shares with the largest price declines with columns: 股票代码, 股票简称, 收盘价(元), 周跌幅(%), 本周最低价(元).

本周A股换手率最大

Table listing A-shares with the highest turnover rates with columns: 股票代码, 股票简称, 本周换手率(%), 上周换手率(%), 收盘价(元).

本周A股市净率最低

Table listing A-shares with the lowest P/B ratios with columns: 股票代码, 股票简称, 收盘价(元), 每股净资产(元), 市净率(倍).

本周券商、信托重仓股升幅最大

Table listing stocks heavily held by securities and trust companies with columns: 股票代码, 股票简称, 券商家数, 2011年一季度券商持有股数(万股), 本周升幅(%).

下周备忘录

Large table listing upcoming events for various stocks, including dates and descriptions of events like dividends, rights issues, etc.

下周解禁个股

Table listing stocks with upcoming unlock dates, including columns for code, name, unlock date, and market value.

本周公告股东减持个股

Table listing stocks with shareholder reduction announcements, including columns for code, name, reduction date, and shares reduced.