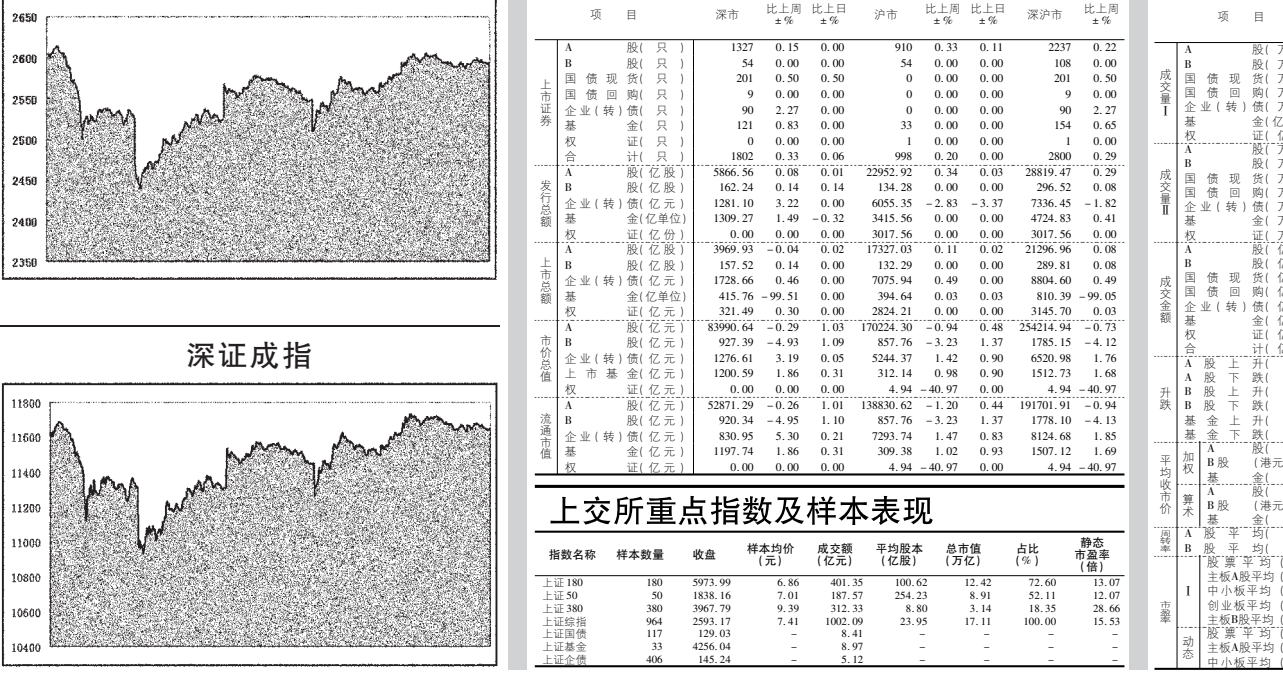


行情 Quotation 深沪证券市场总貌



交易情况

Table showing market transaction details for various sectors like A-shares, B-shares, and H-shares, including volume and value.

价格指数

Table of price indices for various market segments, including Shanghai Composite Index, Shenzhen Composite Index, and others.

上交所重点指数及样本表现

Table of key indices and sample performance for the Shanghai Stock Exchange, including indices like 上证综指 and 上证50.

深证成指:11651.29

Table for the Shenzhen Composite Index (11651.29) showing market status, volume, and price changes.

深沪证券交易所基金/转债

Table of fund and convertible bond performance for the Shenzhen and Shanghai Stock Exchanges.

深交所主板 A 股

Main table of Shenzhen Stock Exchange Main Board A-shares, listing various stocks with their prices, changes, and market status.

深交所创业板 A 股

Main table of Shenzhen Stock Exchange创业板 (Growth Enterprise Market) A-shares, listing various stocks with their prices, changes, and market status.

深交所 ST 股

Main table of Shenzhen Stock Exchange ST (Special Treatment) shares, listing various stocks with their prices, changes, and market status.

注:本版图表系本报信息部根据深交所每日行情提供的数据库数据制作;深交所ID号者为深证成份股指数代码;带\*号为深证100指数代码