

更多财经数据请登录

STCN 证券时报网·中国 http://data.stcn.com

今年以来上市新股五成破发

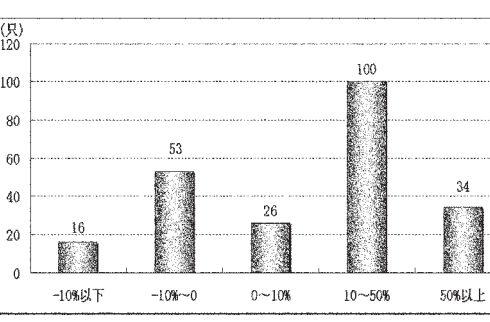
股市的持续走低也让新股破发愈演愈烈。据统计,今年以来共有229家新股陆续上市,而截至昨日收盘,116只新股收盘价低于其发行价,破发家数高达半数。

数据显示,今年以来上市的229只个股中,以昨日收盘为基准,共有116只个股出现破发,从破发幅度看,华锐风电、庞大集团、天瑞仪器等44只个股昨日收盘较发行价折价20%以上,折价率20%以内的共有72家。就破发的时间看,年内上市的新股上市首日即出现破发的就有安居宝、风范股份、庞大集团等69只个股,其

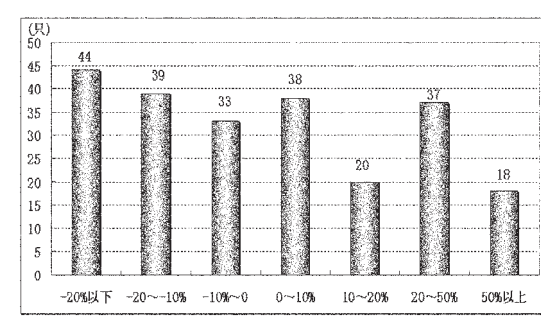
中,庞大集团、天瑞仪器等16只个股上市首日破发幅度在10%以上,庞大集团上市首日跌幅高达23.16%,成为首日跌幅最多的个股。

新股频繁破发受累于股指的低迷表现,也与其高市盈率发行及大量募资不无关系。数据显示,今年以来229只上市新股首发共募资2259亿元,超过其预计募资金额高达1倍。而从发行市盈率看,229只个股中,发行市盈率在50倍以上的个股共有近百只,新研股份、雷曼光电等5只个股发行市盈率更是在100倍以上,而昨日A股动态市盈率仅有14.3倍。(余莉)

年内上市新股首日涨跌幅区间分布



年内上市新股昨收盘较发行价折溢价分布



年内上市新股上市以来涨跌幅排名

Table listing IPOs ranked by their percentage change in price since listing. Columns include Code, Name, First Day Change, Latest Close Price, and Change from Issue Price. Top entries include 601558 (华锐风电) and 601519 (大智慧).

年内上市新股市场表现

Main table showing the performance of IPOs in 2011. Columns include Code, Name, Listing Date, First Day Change, Issue Price, Latest Close Price, Issue Price Premium, and Industry. It lists 229 companies with their respective financial and market data.

Table showing the performance of IPOs in 2011, continuing from the previous table. It lists companies like 300213 (佳讯飞鸿), 002579 (中京电子), and 002580 (圣阳股份).

年内上市新股破发幅度排名

Table ranking IPOs by the magnitude of their price drop below the issue price. Columns include Code, Name, First Day Change, Latest Close Price, and Change from Issue Price. Top entries include 601558 (华锐风电) and 300165 (天瑞仪器).

年内上市新股首发募资金额排名

Table ranking IPOs by the total amount of funds raised in their first offering. Columns include Code, Name, Issue Size (in 10,000 shares), Issue Price, and Total Amount (in 100 million yuan). Top entries include 601558 (华锐风电) and 601258 (庞大集团).

年内上市新股发行市盈率排名

Table ranking IPOs by their initial public offering (IPO) P/E ratio. Columns include Code, Name, Issue Price, Issue P/E Ratio, and Dynamic P/E Ratio. Top entries include 300159 (新研股份) and 300162 (雷曼光电).

(专题数据由上海聚源数据服务有限公司提供,数据来源于上市公司公告,若有出入,请以公告为准)