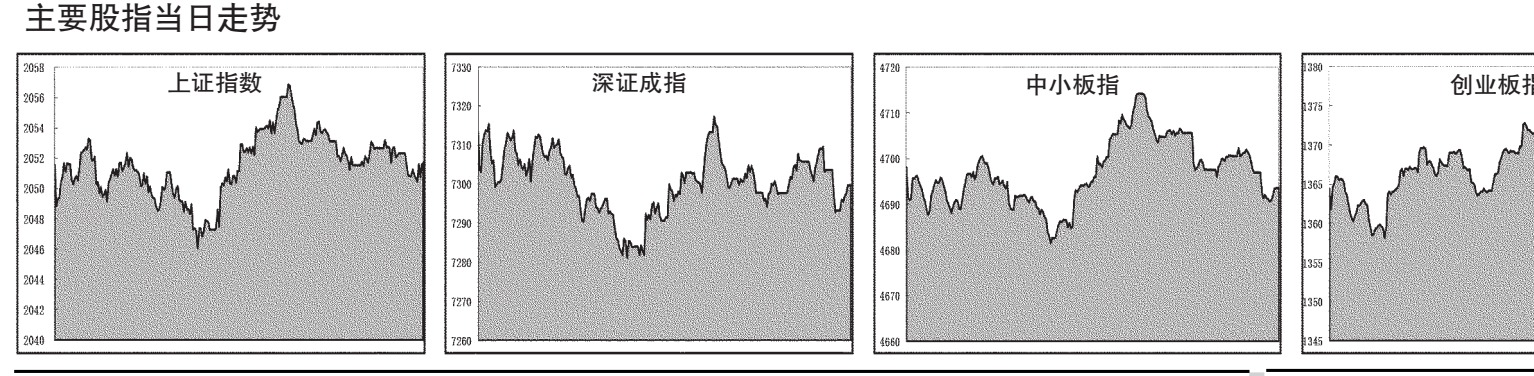


深市基金行情 开放式基金净值



注:本版图表系本报数据部根据深圳证券交易所每日行情提供的基金净值数据制作。

开放式基金净值

Table listing various open-ended funds with columns for fund name, net value, and change percentage. Includes sub-sections for Equity Funds (股票型基金), Bond Funds (债券型基金), and Money Market Funds (货币型基金).

海外主要股市 国际主要黄金市场行情 主要货币兑美元行情

Table showing international market data including major stock indices (e.g., Nikkei, Hang Seng), gold prices, and exchange rates for various currencies against the US dollar.

上海银行同业拆放利率

Table of Shanghai interbank money market rates for different terms like overnight, 1 month, 3 months, and 6 months.

各行业平均市盈率

Table showing average P/E ratios for various industry sectors such as Technology, Healthcare, and Consumer Goods.

债市行情

Table of bond market data including government bonds, corporate bonds, and their respective yields and prices.

股票指数 市场规模

Table comparing stock indices (like CSI 300, CSI 500) and market size metrics such as total market value and turnover.

交易所重点指数及样本表现

Table detailing key indices from exchanges and the performance of their constituent stocks.

指数量型基金

Table listing index-tracking funds with columns for fund name, net value, and tracking error.

QDII (净值截止日期:2014.06.11)

Table of QDII funds (Qualified Domestic Institutional Investor funds) with their net values and performance.

创新封闭式基金

Table of innovative closed-end funds with their net values and performance.

中小板ETF 场外申购赎回价格

Table showing the subscription and redemption prices for Small Board ETFs outside the exchange.

理财型基金

Table of wealth management funds with their net values and performance.